



# PDPM FINAL RULE

## SNF PPS FY 2020



**Presented by**

**CARYN ENDERLE** MA, CCC, SLP  
*Director of Business Development*

Powering Potential  
*beyond the walls of therapy.*

# SNF CURRENT INDUSTRY CHALLENGES



---

## PDPM

Savvy SNF leaders have been preparing for PDPM over the past year. Our current focus needs to be on an efficient transition of patients on October 1<sup>st</sup> and the operationalizing of PDPM for success. Identifying new drivers of success and benchmarks will be key.

---

## STAFFING

SNF providers are challenged with hiring, onboarding, and retaining care providers. The competency, autonomy and clinical reasoning skills of SNF nursing staff has accelerated greatly to meet the demands of more chronically ill and complex patients.

---

## MANAGED CARE

The growth of managed care and Medicare Advantage plans is dramatically impacting SNF providers. The requirements to condense length of stay, achieve better outcomes with less cost, and prevent avoidable readmissions are key to network inclusion.

---

## CENSUS

Census challenges are common for SNF providers. Today's challenges include volume, payor mix, and length of stay. Each of these variables combine to create financial hardship and operational strain.

# FINAL RULE UPDATES

The SNF PPS Final Rule for 2020 included notable updates in three major areas.

- PDPM
- Value-Based Purchasing
- Quality Reporting Program



# PDPM UPDATES



## PDPM **PAYMENT INCREASE**

- Increase payment to SNF's \$851 million or 2.4% for FY 2020 compared to FY 2019.



**FINALIZED FY 2020 URBAN AND RURAL RATES****TABLE 3: FY 2020 Unadjusted Federal Rate Per Diem—URBAN**

Rate Component	PT	OT	SLP	Nursing	NTA	Non-Case-Mix
Per Diem Amount	\$60.75	\$56.55	\$22.68	\$105.92	\$79.91	\$94.84

**TABLE 4: FY 2020 Unadjusted Federal Rate Per Diem—RURAL**

Rate Component	PT	OT	SLP	Nursing	NTA	Non-Case-Mix
Per Diem Amount	\$69.25	\$63.60	\$28.57	\$101.20	\$76.34	\$96.59

# PDPM COMPONENTS UNCHANGED

---

## CLINICAL CATEGORY

NURSING

PT\*

OT\*

SLP

NTA\*

\* Variable Per Diem Adjustment Applied

PT/OT  
**FINAL CMG & CMIs**



PT/OT Clinical Category	Function Score	PT/OT Case Mix Group	PT Case Mix Index	OT Case Mix Index
	0-5	TA	1.53	1.49
<b>Major Joint Replacement</b>	6-9	TB	1.70	1.63
<b>or Spinal Surgery</b>	10-23	TC	1.88	1.69
	24	TD	1.92	1.53
	0-5	TE	1.42	1.41
<b>Other Orthopedic</b>	6-9	TF	1.61	1.60
	10-23	TG	1.67	1.64
	24	TH	1.16	1.15
	0-5	TI	1.13	1.18
<b>Medical Management</b>	6-9	TJ	1.42	1.45
	10-23	TK	1.52	1.54
	24	TL	1.09	1.11
	0-5	TM	1.27	1.30
<b>Non-Orthopedic Surgery</b>	6-9	TN	1.48	1.50
<b>And Acute Neurologic</b>	10-23	TO	1.55	1.55
	24	TP	1.08	1.09



# SPEECH

## FINAL CMG & CMIs



Presence of Acute Neurologic Condition, Speech Comorbidity, Cognitive Impairment	Mechanically Altered Diet or Swallowing Disorder	ST Case Mix Group	ST Case Mix Index
None	Neither	SA	0.68
	Either	SB	1.82
	Both	SC	2.67
Any one	Neither	SD	1.46
	Either	SE	2.34
	Both	SF	2.98
Any two	Neither	SG	2.04
	Either	SH	2.86
	Both	SI	3.53
All three	Neither	SJ	2.99
	Either	SK	3.70
	Both	SL	4.21

# NURSING FINAL CMIs



Nursing Category	Conditions/Services	Conditions/ Services Present	Section GG- Based Function Score	PDPM RUG	Case Mix Index
Extensive Services	Trach Care and Ventilator/Respirator	Yes	0-14	ES3	4.06
	Trach Care or Ventilator/Respirator	Yes	0-14	ES2	3.07
	Infection Isolation	Yes	0-14	ES1	2.93
Special Care High	Depression	Yes	0-5	HDE2	2.40
		No	0-5	HDE1	1.99
		Yes	6-14	HBC2	2.24
		No	6-14	HBC1	1.86
Special Care Low	Depression	Yes	0-5	LDE2	2.08
		No	0-5	LDE1	1.73
		Yes	6-14	LBC2	1.72
		No	6-14	LBC1	1.43
Clinically Complex	Depression	Yes	0-5	CDE2	1.87
		No	0-5	CDE1	1.62
		Yes	6-14	CBC2	1.55
		Yes	15-16	CA2	1.09
		No	6-14	CBC1	1.34
		No	15-16	CA1	0.94
Behavioral Cognitive Symptoms	Restorative Nursing Services	2 or More	11-16	BAB2	1.04
		0-1	11-16	BAB1	0.99
Reduced Physical Function	Restorative Nursing Services	2 or More	0-5	PDE2	1.57
		0-1	0-5	PDE1	1.47
		2 or More	6-14	PBC2	1.22
		2 or More	15-16	PA2	0.71
		0-1	6-14	PBC1	1.13
		0-1	15-16	PA1	0.66

# NTA POINT VALUE

## Final Conditions and Extensive Services for NTA Classification

**TABLE 27: Conditions and Extensive Services Used for NTA Classification**

Condition/Extensive Service	Source	Points
HIV/AIDS	SNF Claim	8
Parenteral IV Feeding: Level High	MDS Item K0510A2, K0710A2	7
Special Treatments/Programs: Intravenous Medication Post-admit Code	MDS Item O0100H2	5
Special Treatments/Programs: Ventilator or Respirator Post-admit Code	MDS Item O0100F2	4
Parenteral IV feeding: Level Low	MDS Item K0510A2, K0710A2, K0710B2	3
Lung Transplant Status	MDS Item I8000	3
Special Treatments/Programs: Transfusion Post-admit Code	MDS Item O0100I2	2
Major Organ Transplant Status, Except Lung	MDS Item I8000	2
Active Diagnoses: Multiple Sclerosis Code	MDS Item I5200	2
Opportunistic Infections	MDS Item I8000	2
Active Diagnoses: Asthma COPD Chronic Lung Disease Code	MDS Item I6200	2
Bone/Joint/Muscle Infections/Necrosis - Except Aseptic Necrosis of Bone	MDS Item I8000	2
Chronic Myeloid Leukemia	MDS Item I8000	2
Wound Infection Code	MDS Item I2500	2
Active Diagnoses: Diabetes Mellitus (DM) Code	MDS Item I2900	2
Endocarditis	MDS Item I8000	1
Immune Disorders	MDS Item I8000	1
End-Stage Liver Disease	MDS Item I8000	1
Other Foot Skin Problems: Diabetic Foot Ulcer Code	MDS Item M1040B	1
Narcolepsy and Cataplexy	MDS Item I8000	1
Cystic Fibrosis	MDS Item I8000	1
Special Treatments/Programs: Tracheostomy Care Post-admit Code	MDS Item O0100E2	1
Active Diagnoses: Multi-Drug Resistant Organism (MDRO) Code	MDS Item I1700	1
Special Treatments/Programs: Isolation Post-admit Code	MDS Item O0100M2	1
Specified Hereditary Metabolic/Immune Disorders	MDS Item I8000	1
Morbid Obesity	MDS Item I8000	1
Special Treatments/Programs: Radiation Post-admit Code	MDS Item O0100B2	1

# NTA POINT VALUE

## Final Conditions and Extensive Services for NTA Classification continued...

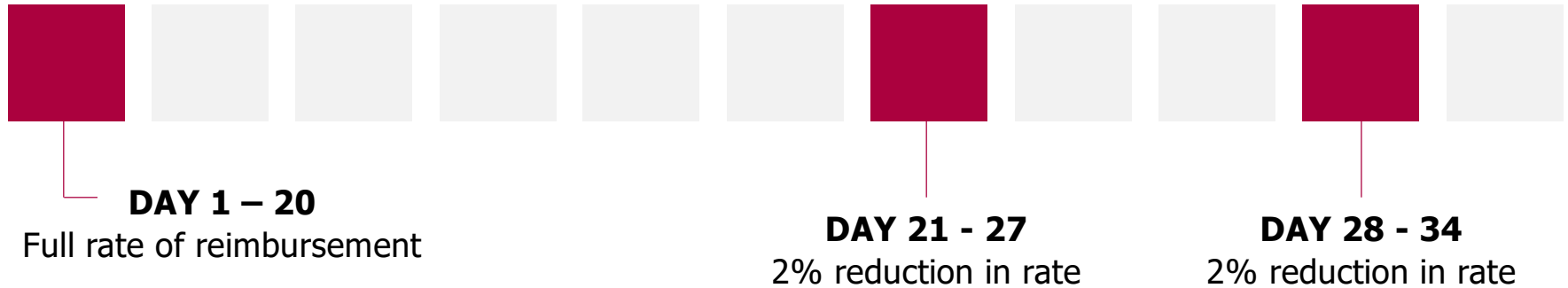
Condition/Extensive Service	Source	Points
Highest Stage of Unhealed Pressure Ulcer - Stage 4	MDS Item M0300X1	1
Psoriatic Arthropathy and Systemic Sclerosis	MDS Item I8000	1
Chronic Pancreatitis	MDS Item I8000	1
Proliferative Diabetic Retinopathy and Vitreous Hemorrhage	MDS Item I8000	1
Other Foot Skin Problems: Foot Infection Code, Other Open Lesion on Foot Code, Except Diabetic Foot Ulcer Code	MDS Item M1040A, M1040B, M1040C	1
Complications of Specified Implanted Device or Graft	MDS Item I8000	1
Bladder and Bowel Appliances: Intermittent Catheterization	MDS Item H0100D	1
Inflammatory Bowel Disease	MDS Item I8000	1
Aseptic Necrosis of Bone	MDS Item I8000	1
Special Treatments/Programs: Suctioning Post-admit Code	MDS Item O0100D2	1
Cardio-Respiratory Failure and Shock	MDS Item I8000	1
Myelodysplastic Syndromes and Myelofibrosis	MDS Item I8000	1
Systemic Lupus Erythematosus, Other Connective Tissue Disorders, and Inflammatory Spondylopathies	MDS Item I8000	1
Diabetic Retinopathy - Except Proliferative Diabetic Retinopathy and Vitreous Hemorrhage	MDS Item I8000	1
Nutritional Approaches While a Resident: Feeding Tube	MDS Item K0510B2	1
Severe Skin Burn or Condition	MDS Item I8000	1
Intractable Epilepsy	MDS Item I8000	1
Active Diagnoses: Malnutrition Code	MDS Item I5600	1
Disorders of Immunity - Except : RxCC97: Immune Disorders	MDS Item I8000	1
Cirrhosis of Liver	MDS Item I8000	1
Bladder and Bowel Appliances: Ostomy	MDS Item H0100C	1
Respiratory Arrest	MDS Item I8000	1
Pulmonary Fibrosis and Other Chronic Lung Disorders	MDS Item I8000	1

NON-THERAPY ANCILLARY  
**FINAL CMG & CMIs**



NTA Comorbidity Score	NTA Case Mix Group	Case Mix Index
12+	NA	3.24
9-11	NB	2.53
6-8	NC	1.84
3-5	ND	1.33
1-2	NE	0.96
0	NF	0.72

## VARIABLE PER DIEM SCHEDULE



Medicare Payment Days	Adjustment Factor
1-20	1.00
21-27	0.98
28-34	0.96
35-41	0.94
42-48	0.92
49-55	0.90
56-62	0.88
63-69	0.86
70-76	0.84
77-83	0.82
84-90	0.80
91-97	0.78
98-100	0.76

PT/OT Adjustment Factor

### NTA Adjustment Factor

Medicare Payment Days	Adjustment Factor
1-3	3.0
4-100	1.0

# IPA **INTERIM PAYMENT ASSESSMENT**



---

The Interim Payment Assessment (IPA) is OPTIONAL and providers will determine their own criteria for when an IPA is needed based on clinical changes throughout the stay:

1. The ARD for the IPA will be the date the facility chooses to complete the assessment
2. Payment based on the IPA will begin the same date as the ARD
3. The MDS item set used for an IPA will be the same as the 5-day PPS Assessment





## GROUP THERAPY **UNDER PDPM**

---

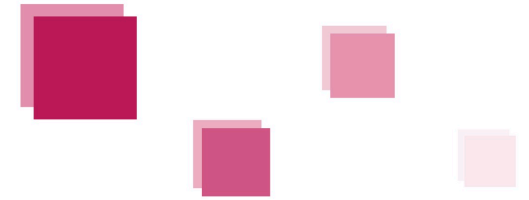
### **DEFINITION**

- Group therapy for SNF providers is designated as 2-6 residents.
- This aligns consistency in payment policies across PAC settings.
- Stipulations remain 75% of therapy minutes must be individual with maximum of 25% of minutes combined for group and concurrent for each discipline.



## PROCESS FOR ICD010 CODE **REVISIONS**

---



- CMS approved a sub-regulatory process for updating ICD-10 code mappings and lists associated with PDPM.
- Updates will be publicly posted on CMS's PDPM website.
- In June after FY 2020 SNF Proposed Rule was issued, CMS released the FY 2020 ICD-10 Code updates. Access this by clicking [here.](#)

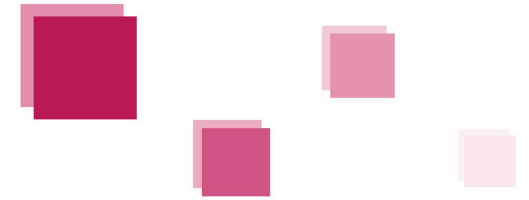




# **VALUE-BASED PURCHASING UPDATES**

## VALUE-BASED PURCHASING **UPDATES**

---



- Changing name to SNFPPR to “Skilled Nursing Facility Potentially Preventable Readmissions after Hospital Discharge”
- Update to reporting requirements to ensure that CMS publishes accurate performance information for low volume SNFs





# **QUALITY REPORTING PROGRAM UPDATES**

# QUALITY REPORTING PROGRAM UPDATES

## FY 2021 HAS 11 SNF QRP MEASURES

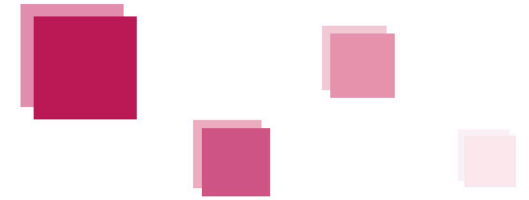
\* Discharge to Community  
Post Acute Care SNF QRP  
measure will exclude baseline  
nursing home residents

**TABLE 12: Quality Measures Currently Adopted for the FY 2021 SNF QRP**

Short Name	Measure Name & Data Source
<b>Resident Assessment Instrument Minimum Data Set</b>	
Pressure Ulcer/Injury	Changes in Skin Integrity Post-Acute Care: Pressure Ulcer/Injury.
Application of Falls	Application of Percent of Residents Experiencing One or More Falls with Major Injury (Long Stay) (NQF #0674).
Application of Functional Assessment/Care Plan	Application of Percent of Long-Term Care Hospital (LTCH) Patients with an Admission and Discharge Functional Assessment and a Care Plan That Addresses Function (NQF #2631).
Change in Mobility Score	Application of IRF Functional Outcome Measure: Change in Mobility Score for Medical Rehabilitation Patients (NQF #2634).
Discharge Mobility Score	Application of IRF Functional Outcome Measure: Discharge Mobility Score for Medical Rehabilitation Patients (NQF #2636).
Change in Self-Care Score	Application of the IRF Functional Outcome Measure: Change in Self-Care Score for Medical Rehabilitation Patients (NQF #2633).
Discharge Self-Care Score	Application of IRF Functional Outcome Measure: Discharge Self-Care Score for Medical Rehabilitation Patients (NQF #2635).
DRR	Drug Regimen Review Conducted With Follow-Up for Identified Issues—Post Acute Care (PAC) Skilled Nursing Facility (SNF) Quality Reporting Program (QRP).
<b>Claims-Based</b>	
MSPB SNF	Medicare Spending Per Beneficiary (MSPB)—Post Acute Care (PAC) Skilled Nursing Facility (SNF) Quality Reporting Program (QRP).
DTC	Discharge to Community (DTC)—Post Acute Care (PAC) Skilled Nursing Facility (SNF) Quality Reporting Program (QRP).
PPR	Potentially Preventable 30-Day Post-Discharge Readmission Measure for Skilled Nursing Facility (SNF) Quality Reporting Program (QRP).

## QUALITY REPORTING PROGRAM **UPDATES**

---



Two new SPADE quality measures were added to assess whether certain health information is provide by the SNF at the time of transfer or discharge which will begin with FY 2022 SNF QRP and includes:

- Transfer of health information to the Provider-Post-Acute-Care
- Transfer of health information to the Patient-Post-Acute-Care



# FY 2022 SNF QRP PROGRAM YEAR QMs



Short Name	Measure Name & Data Source
<b>Resident Assessment Instrument Minimum Data Set</b>	
<b>Pressure Ulcer/Injury</b>	Changes in Skin Integrity Post-Acute Care: Pressure Ulcer/Injury
<b>Application of Falls</b>	Application of Percent of Residents Experiencing One or More Falls with Major Injury (Long Stay) (NQF #0674)
<b>Application of Functional Assessment/Care Plan</b>	Application of Percent of Long-Term Care Hospital (LTCH) Patients with an Admission and Discharge Functional Assessment and a Care Plan That Addresses Function (NQF #2631)
<b>Change in Mobility Score</b>	Application of IRF Functional Outcome Measure: Change in Mobility Score for Medical Rehabilitation Patients (NQF #2634)
<b>Discharge Mobility Score</b>	Application of IRF Functional Outcome Measure: Discharge Mobility Score for Medical Rehabilitation Patients (NQF #2636)
<b>Change in Self-Care Score</b>	Application of the IRF Functional Outcome Measure: Change in Self-Care Score for Medical Rehabilitation Patients (NQF #2633)
<b>Discharge Self-Care Score</b>	Application of IRF Functional Outcome Measure: Discharge Self-Care Score for Medical Rehabilitation Patients (NQF #2635)
<b>DRR</b>	Drug Regimen Review Conducted With Follow-Up for Identified Issues—Post Acute Care (PAC) Skilled Nursing Facility (SNF) Quality Reporting Program (QRP)
<b>Newly adopted</b>	Transfer of Health Information to the Provider—Post-Acute Care (PAC)
<b>Newly adopted</b>	Transfer of Health Information to the Patient—Post-Acute Care (PAC)
<b>Claims-Based</b>	
<b>MSPB SNF</b>	SNF Medicare Spending Per Beneficiary (MSPB)—Post Acute Care (PAC) Skilled Nursing Facility (SNF) Quality Reporting Program (QRP)
<b>DTC / updated with new exclusion</b>	Discharge to Community (DTC)—Post Acute Care (PAC) Skilled Nursing Facility (SNF) Quality Reporting Program (QRP)
<b>PPR</b>	Potentially Preventable 30-Day Post-Discharge Readmission Measure for Skilled Nursing Facility (SNF) Quality Reporting Program (QRP)



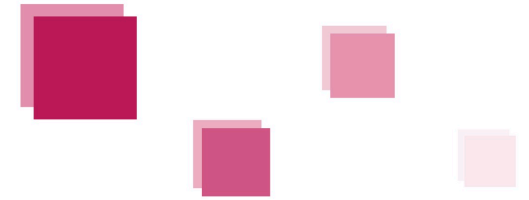
## QUALITY REPORTING PROGRAM **UPDATES**

- New program SPADEs (Standardized Patient Assessment Data Elements) beginning with FY 2022 will include 75 assessment data (SPADE) elements including the following categories:
  - Functional Status
  - Cognitive Function
  - Special Services, Treatments, and Interventions
  - Medical Conditions and Comorbidities
  - Impairments
  - Other categories deemed necessary and appropriate
- Data collection will begin October 1, 2020 through December 31, 2020 for the FY 2022 SNF QRP
- We can expect the MDS form to change October 1, 2020 to support the SPADEs program



## QUALITY REPORTING PROGRAM **UPDATES**

---



- To accommodate the new reporting, CMS has reported that it will add “only 59.5 items across the PPS admission and PPS discharge assessments.”
- CMS intends for the SPADE data to “inform care planning, the common standards and definitions to facilitate interoperability, and to allow for comparing assessment data for standardized measures.” Consequently, SNFs should anticipate the use of SPADEs in the SNF QRP QMs to continue to grow through future rulemaking.
- Summary of SPADE adoptions for FY 2022 (effective October 1, 2020) by category not including the two new SPADEs involved in the Transfer of Health Information QMs.



# QUALITY REPORTING PROGRAM UPDATES



## 1. Cognitive Function and Mental Status Data:

- Brief Interview for Mental Status (BIMS): Adopted as proposed;
- Confusion Assessment Method (CAM): Adopted as proposed; and
- Patient Health Questionnaire-2 to 9 (PHQ-2 to 9): Adopted as proposed.

## 2. Special Services, Treatments, and Interventions Data:

- a) Cancer Treatment: Chemotherapy (IV, Oral, Other): Adopted as proposed.
- b) Cancer Treatment: Radiation: Adopted as proposed.
- c) Respiratory Treatment: Oxygen Therapy (Intermittent, Continuous, High-Concentration Oxygen Delivery System): Adopted as proposed.
- d) Respiratory Treatment: Suctioning (Scheduled, As needed): Adopted as proposed.
- e) Respiratory Treatment: Tracheostomy Care: Adopted as proposed.
- f) Respiratory Treatment: Non-invasive Mechanical Ventilator (BiPAP, CPAP): Adopted as proposed.
- g) Respiratory Treatment: Invasive Mechanical Ventilator: Adopted as proposed.
- h) Intravenous (IV) Medications (Antibiotics, Anticoagulants, Vasoactive Medications, Other): Adopted as proposed.
- i) Transfusions: Adopted as proposed.
- j) Dialysis (Hemodialysis, Peritoneal dialysis): Adopted as proposed.
- k) Intravenous (IV) Access (Peripheral IV, Midline, Central line): Adopted as proposed.
- l) Nutritional Approach: Parenteral/IV Feeding: Adopted as proposed.
- m) Nutritional Approach: Feeding Tube: Adopted as proposed.
- n) Nutritional Approach: Mechanically Altered Diet: Adopted as proposed.
- o) Nutritional Approach: Therapeutic Diet: Adopted as proposed.
- p) High-Risk Drug Classes: Use and Indication: Adopted as proposed.

## 3. Medical Condition and Comorbidity Data:

- a) Pain Interference (Pain Effect on Sleep, Pain Interference with Therapy Activities, and Pain Interference with Day-to-Day Activities): Adopted as proposed.

## 4. Impairment Data:

- a) Hearing: Adopted as proposed.
- b) Vision: Adopted as proposed.

## 5. New Category: Social Determinants of Health (SDOH) Data:

- 1) Race: Adopted as proposed.
- 2) Ethnicity: Adopted with one technical change, i.e., the addition of the word "of" to the question, "Are you of Hispanic, Latino/a, or Spanish origin?"
- 3) Preferred Language: Adopted with the modification that CMS will deem SNFs that submit this SPADE with respect to admission to have submitted with respect to discharge as well.
- 4) Interpreter Services: Adopted with the modification that CMS will deem SNFs that submit this SPADE with respect to admission to have submitted with respect to discharge as well.
- 5) Health Literacy: Adopted as proposed.
- 6) Transportation: Adopted as proposed.
- 7) Social Isolation: Adopted as proposed.



## CMS FINAL RULE **IN SUMMARY**

- Be sure you are using updated urban and rural rates for financial analysis and prospective PDPM
- Use final CMIs and CMGs for therapy, nursing and NTA
- Be aware that residents in your SNF could be in groups of 2 – 6 for education and patient engagement
- IPA remains optional
- Know the 11 SNF QRP measures for FY 2021
- Be familiar with the FY 2022 SNF QRP QMs and the 2 new QMs related to information transfer
- Understand the new SPADEs program for FY 2022, the assessment elements and categories
- **34 DAYS LEFT TO MAKE FINAL PREPARATIONS FOR PDPM!**

# CONCEPT REHAB'S SNF RESOURCE CENTER

In order to keep you and your interdisciplinary team up to date, download our revised PDPM Quick Guides that include the Final Rule revisions and updates.



[Download Now](#)

# CONCEPT REHAB'S CROSSWALK TOOL



Pre-populated  
SNF Data



Interactive  
Data Modeling



Instruction &  
Resources

**PDPM CROSSWALK TOOL**  
Model PDPM vs. RUG for Reimbursement & Data Collection

Form fields include: Patient ID, Admission Date, Discharge Date, SNF Name, SNF Type, SNF Location, SNF Address, SNF Phone, SNF Fax, SNF Email, SNF Website, SNF Description, SNF Services, SNF Facilities, SNF Equipment, SNF Staff, SNF Costs, SNF Reimbursement, SNF Profit, SNF Margin, SNF Return on Investment, SNF Break-Even Point, SNF Payback Period, SNF Net Present Value, SNF Internal Rate of Return, SNF Payoff Period, SNF Sensitivity Analysis, SNF Scenario Analysis, SNF Monte Carlo Simulation, SNF Decision Tree Analysis, SNF Real Options Analysis, SNF Real Estate Analysis, SNF Infrastructure Analysis, SNF Environmental Analysis, SNF Social Analysis, SNF Cultural Analysis, SNF Ethical Analysis, SNF Legal Analysis, SNF Regulatory Analysis, SNF Industry Analysis, SNF Market Analysis, SNF Competitive Analysis, SNF Porter's Five Forces, SNF SWOT Analysis, SNF PESTLE Analysis, SNF STEEP Analysis, SNF BCG Matrix, SNF GE-McKinsey Matrix, SNF Portfolio Matrix, SNF Growth-Share Matrix, SNF Market Penetration Matrix, SNF Market Development Matrix, SNF Product Development Matrix, SNF Diversification Matrix, SNF Strategic Initiatives, SNF Key Success Factors, SNF Critical Path Method, SNF Program Evaluation Review Technique, SNF Risk Management, SNF Quality Management, SNF Total Quality Management, SNF Six Sigma, SNF Lean Manufacturing, SNF Kaizen, SNJ Continuous Improvement, SNF Benchmarking, SNF Best Practices, SNF Knowledge Management, SNF Innovation Management, SNF Change Management, SNF Project Management, SNF Business Process Management, SNF Supply Chain Management, SNF Logistics Management, SNF Procurement Management, SNF Human Resource Management, SNF Financial Management, SNF Accounting Management, SNF Tax Management, SNF Insurance Management, SNF Legal Management, SNF Compliance Management, SNF Environmental Management, SNF Health and Safety Management, SNF Information Management, SNF Technology Management, SNF Data Management, SNF Analytics Management, SNF Artificial Intelligence Management, SNF Blockchain Management, SNF Internet of Things Management, SNF Cloud Management, SNF Cybersecurity Management, SNF Digital Transformation Management, SNF Industry 4.0 Management, SNF Smart Manufacturing Management, SNF Smart Cities Management, SNF Smart Agriculture Management, SNF Smart Transportation Management, SNF Smart Energy Management, SNF Smart Healthcare Management, SNF Smart Education Management, SNF Smart Retail Management, SNF Smart Construction Management, SNF Smart Infrastructure Management, SNF Smart Utilities Management, SNF Smart Services Management, SNF Smart Governance Management, SNF Smart Society Management, SNF Smart Future Management.

**COLLECT & MODEL**  
Collect your data to model PDPM

The tool will collect data from the PDPM Crosswalk and allow PDPM users to transfer and view the collected results from the electronic tool. As the data, coding, and revenue are entered into the electronic tool, the tool will display the results on the screen for review and comparison, decision and action.

ConceptRehab





**Caryn Enderle**

Director of Business Development

CarynE@conceptrehab.com

614-570-2404



**Concept Rehab**

7150 Granite Circle #200

Toledo, OH 43617

419-843-6002